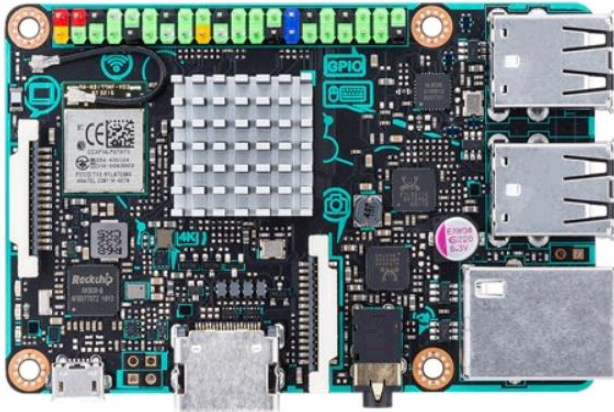


# Tinker Board



## המעבד

Rockchip Quad-Core RK3288 processor ✓

## זיכרון

2GB Dual Channel DDR3 ✓

## גרפיקה

Integrated Graphics Processor ✓

ARM® Mali™-T764 GPU\*1

## אחסון

Micro SD(TF) card slot ✓

## רשת

RTL GB LAN ✓

## רשת אלחוטית

802.11 b/g/n, Bluetooth V4.0 + EDR ✓

## אודיו

RTL ALC4040 CODEC ✓

## יציאות USB

4 x USB 2.0 ✓

## יציאות/כניסות פנימיות

✓

1 x 15-pin MIPI DSI	✓	1 x 2-pin contact pin	✓	1 x 40-pin header	✓
1 x 15-pin MIPI CSI	✓	1 x PWM	✓	up to 28 x GPIO pins	✓
	✓	1 x S/PDIF	✓	up to 2 x SPI bus	✓
	✓		✓	up to 2 x I2C bus	✓
	✓		✓	up to 4 x UART	✓
	✓		✓	up to 2 x PWM	✓
	✓		✓	up to 1 x PCM/I2S	✓
	✓		✓	2 x 5V power pins	✓
	✓		✓	2 x 3.3V power pins	✓
	✓		✓	8 x ground pins	✓

## אביזרים

Passive heatsink\*2 ✓

User manual

## משקל

55g ✓

## הערות

\*1. The ARM® Quad-Core Mali GPU supports max. resolution of 4K@30hz (up-scaled from 1080P) with H.264/H.265 hardware decoder (update coming soon). ✓

\*2. Do not touch the SoC or heatsink surface directly to prevent possible burn injury.